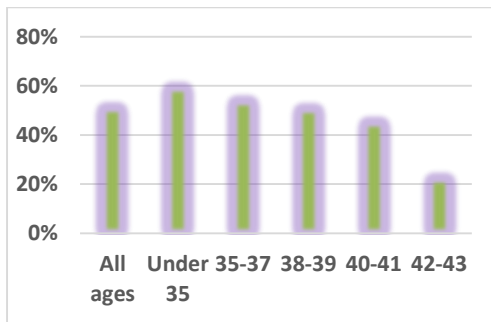




MFC News

July

IVF Success Rates



We are delighted to report that we are maintaining our excellent IVF success rates with an overall clinical pregnancy rate for the **last 12 months of 51.1% and 59% for women under 35**. Our twin pregnancy rate continues to go down at 9.9% for the same period. 39.2% of couples had single embryo transfers and the clinical pregnancy rate in this group was **64%** with no twin pregnancies.

ESHRE (European Society for Human Reproduction and Embryology)

Several MFC members attended this conference in Lisbon in June 2015. Some interesting facts include that 1.5 to 2 million IVF cycles are performed throughout the world every year. To date 77 million babies have been born following IVF and related techniques and it is estimated that there are, at any one time, 48 million couples suffering from infertility throughout the world.

Another updated study presented at ESHRE showed again that Ireland is one of a handful of countries which does not have either regulation or public funding for assisted

reproduction. MFC is advocating for these issues as much as it can.

New Doctors at MFC

Dr Sandra Brett recently joined our medical team (Dr Wingfield, Dr Allen and Dr Spillane). Sandra has extensive experience in fertility both in Ireland and the UK. From July 2015 we will also have another consultant, Dr Fiona Martyn, who will also be working as a Consultant Obstetrician Gynaecologist at the National Maternity Hospital. We will also have a new Clinical Fellow, Dr Yvonne O'Brien, in July.

We are very lucky to have such an excellent team of fertility doctors. Our specialist interests include endometriosis, laparoscopic and hysteroscopic surgery, miscarriage and pregnancy related issues.

Simplifying baseline tests


We have recently reviewed our baseline investigations and the following are all we now recommend prior to the first visit in routine cases:

- ❖ Progesterone (7 days before next period)
- ❖ AMH (can be done at MFC)
- ❖ Ultrasound at MFC
- ❖ Semen analysis at MFC
- ❖ TSH
- ❖ Rubella
- ❖ Ensure smears up to date. Advise re Folic acid, BMI (19-30), stop cigs and other recreational drugs.

New Website

We are launching our new and improved website later this month. The new site will be more interactive with ease of navigation and relevant information the priority.

GPs will now be able to make referrals on line via the homepage.



Dr Mary Wingfield, Clinical Director